



مصنع النجوم للخزانات البلاستيكية (ذ.م.م.)
Stars Poly Storage Tanks Factory (L.L.C.)

PRODUCT CATALOG

Certified by:



UNDERGROUND WATER TANKS

SPECIAL FEATURES

- Corrosion Proof
- Fungus & Bacterial Proof
- Manufactured From Food Grade Approved Materials
- Dubai Municipality Approved
- Low Maintenance
- Long Life
- No Risk Of Contamination
- Easy to Clean and Maintenance free
- Molded One Piece (No Joints) including 50 cm vertical neck
- Very Strong Body
- Can Carry A Liner Load of 3,500 Kg/m when it is empty
- Can Carry A Total Load of 7,500 Kg when it is empty
- Can be installed under the car parking area and it can carry the load of Two Car + Soil Load on top even when it is empty (Without Any Supporting Chamber & Concrete Foundation)
- Tested In Virtual Engineering Center - Queens University Of Belfast
- Warranted For 10 Years
- NSF Certificate
- WRAS Certificate
- Threaded Sealed Lid Cover



Measurements & Specifications

Model	Capacity (US Gallon)	Capacity (liter)	IMP	Length (cm)	Diameter (cm)	Height (cm)		
						Height	Neck Height	Total
SPHU 36	365	1382	303	180	116	116	50	166
SPHU 50	500	1893	415	220	123	123	50	173
SPHU 50-S	500	1893	415	180	130	130	50	180
SPHU 60	600	2271	498	220	136	132	50	182
SPHU 70	700	2650	581	235	142	142	50	192
SPHU 80	800	3028	664	235	148	148	50	198
SPHU 95	925	3501	768	248	149	149	50	199
SPHU 95-N	925	3501	768	245	155	155	50	205
SPHU 100	1000	3785	830	238	170	170	50	220
SPHU 120	1200	4542	996	255	175	175	35	210
SPHU 150	1500	5678	1245	285	180	180	50	230
SPHU 180	1800	6813	1494	310	180	180	50	230
SPHU 200	2100	7949	1743	310	190	190	50	240
SPHU 230	2300	8706	1909	296	212	212	50	262

Production of the tanks consist of:

• First Layer / Outer Layer

(Black Color Solid Skin)

UV stabilized polyethylene with food grade black color that acts as an additional UV stabilizer.

• Second Layer / Middle Layer

(Polyethylene Foam Clear Color)

This layer provides the tank the following values:

- Thermal insulation
- Improving Stiffness

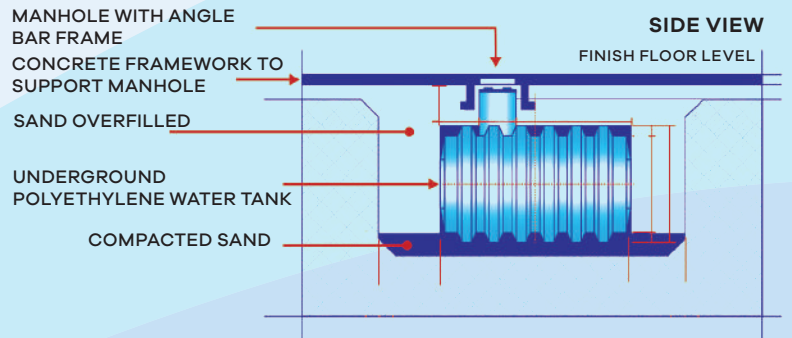
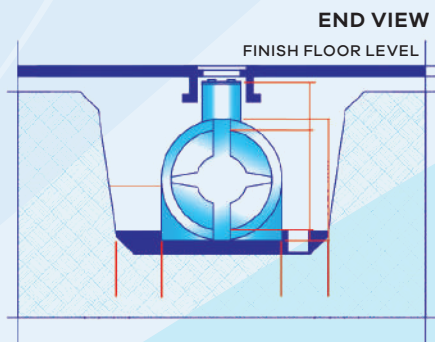
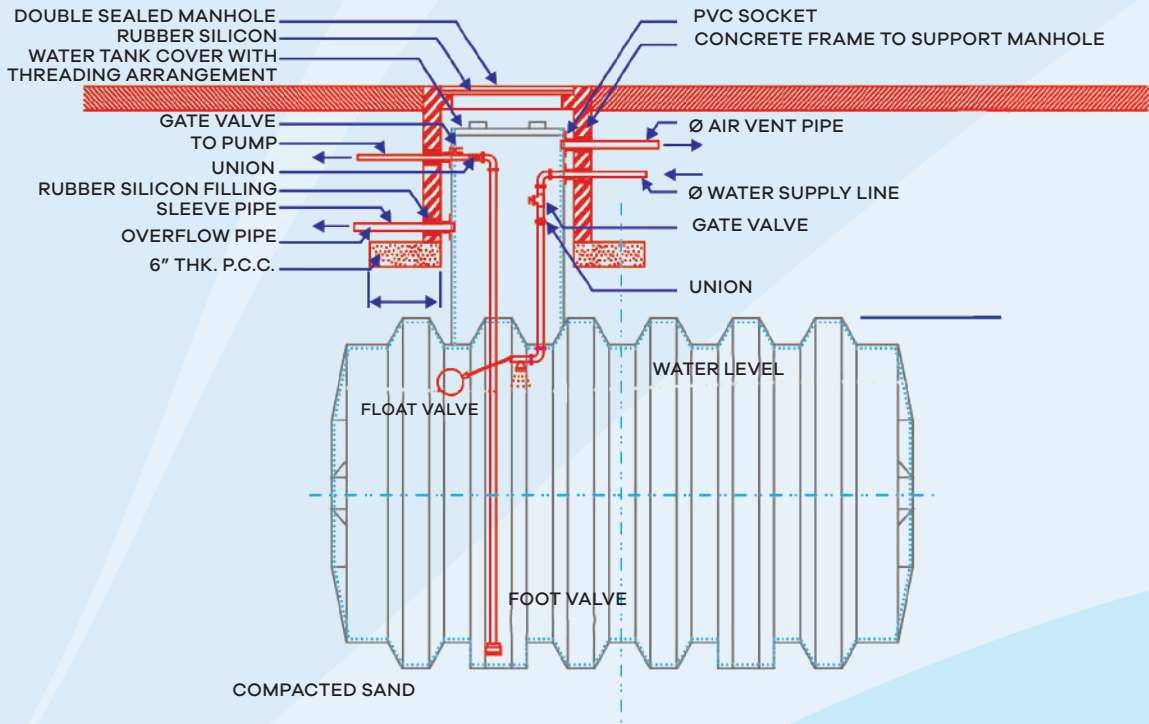
• Third Layer / Inner Layer

(Polyethylene White Color Solid Skin)

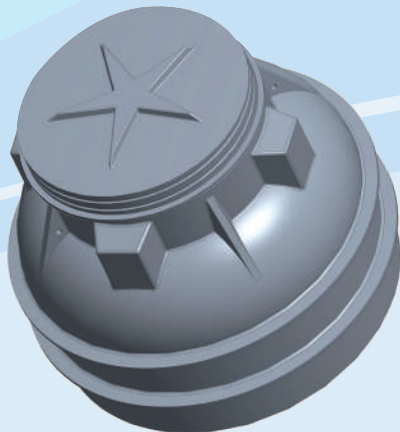
Works the same as first layer and provides anti-bacterial growth and to keep the tank visible from inside.



PLAN



UNDERGROUND PUMP CHAMBER



Height (cm)	Diameter (cm)	Inner Manhole Diameter (cm)	Outer Manhole Diameter (cm)
100	115	65	75



مصنع النجوم للخزانات البلاستيكية (ذ.م.م.)
Stars Poly Storage Tanks Factory (L.L.C.)

Certified by:



Scan here



T: +971 4 347 6200 | F: +971 4 347 6232 | P.O. Box 37552, **DUBAI**, UAE

E: inquire@starspoly.com

www.starspoly.com